

WEATHERHEAD SCHOLARS PROGRAM 2021–2022



The Weatherhead Scholars Program, formerly known as the Fellows Program, welcomed its first class of participants in 2017–2018. The Weatherhead Scholars Program offers visiting faculty, postdoctoral researchers, and experienced practitioners the opportunity to spend up to one year at Harvard conducting comparative international research. During their time in residence, Scholars are expected to participate in the biweekly Weatherhead Forum and in the program's biweekly Scholars' seminar; contribute to some of the Center's many other intellectual activities, including our research clusters; and engage with the undergraduate and graduate student communities.

Erin Goodman is the Scholars Program director. The program offices are located at 61 Kirkland Street.

ADMINISTRATION



MELANI CAMMETT
Program Faculty Chair; Center Director. Clarence Dillon Professor of International Affairs, Department

of Government, Harvard University; Professor, Department of Global Health and Population, Harvard T.H. Chan School of Public Health. Comparative politics; politics of development; welfare; religion and ethnicity; conflict; and Middle East politics.



ERIN GOODMAN
Director. Latin America; US-Cuba relations; historical memory; and translation.

AFFILIATES



MELIKE ARSLAN
Raphael Morrison Dorman Memorial Postdoctoral Fellow. PhD, Department of Sociology, Northwestern

University. Economic sociology; international political economy; legal studies; professionals and expertise; and comparative-historical methods.



POULOMI CHAKRABARTI
Postdoctoral Fellow (Fall 2021). Assistant Professor, Department of Political Studies, Queen's University.

Political economy of development; identity politics; inequality; urban politics; and India.



ADAM P. COUTTS
Visiting Scholar. Research Associate, Department of Sociology; Senior Research Fellow,

Magdalene College, University of Cambridge. Health impacts of public policies in the UK, Middle East and North Africa, and Europe; political economy of health and wellbeing; evaluation of public policies using randomized control trials and ethnographic methods; unemployment and mental health; poverty reduction and development policies; and humanitarian intervention and refugee policy.



OYA DURSUN-ÖZKANCA
Visiting Scholar. Professor of Political Science, School of Public Service; College Professor of International Studies

(Endowed Chair), Elizabethtown College. Turkey; transatlantic security; EU; NATO; eastern Mediterranean; southeast Europe; peace operations; and security sector reform.



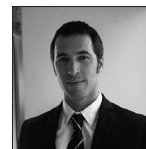
CARMEN S. GEHA
Visiting Scholar (fall 2021). Assistant Professor of Public Administration, Department of Political Studies and Public

Administration, American University of Beirut. Power-sharing politics; crisis; sectarianism; civil society; and gender and Middle East studies.



NATE GEORGE
Raphael Morrison Dorman Memorial Postdoctoral Fellow. PhD, Department of History, Rice University.

Global histories of revolution and counterrevolution; imperialism and colonialism; socialism, anticolonialism, and decolonization; the Arab world; sectarianism, racism, and colonial social difference; and the US in the world.



YOSSI HARPAZ
Visiting Scholar. Assistant Professor, Department of Sociology and Anthropology, Tel-Aviv University.

Globalization; international migration; citizenship; nationalism and ethnicity; political sociology; social theory; and historical-comparative sociology.



MICHAEL F. HARSCH
Visiting Scholar. Visiting Assistant Professor of International Relations, Frederick S. Pardee School of Global

Studies, Boston University. International security; international organizations; conflict; development; peacekeeping; and state building.



ANNETTE IDLER
Visiting Scholar (Fall 2021). Director of Studies, Changing Character of War Centre, Pembroke

College, University of Oxford. Armed conflict and transnational organized crime; security studies; violent nonstate groups; borders and borderlands; Latin America; and the Global South.

Affiliates (cont.)

**MAX JACOBS**

Fellow (Fall 2021). Policy Advisor, Hamburg Greens Parliamentary Group. Public policy; natural capital; climate change; political framing; EU policy; and law and economics.

**TAIR KARAZI-PRESLER**

Postdoctoral Fellow. Postdoctoral Fellow, Department of Management and Economics, The

Open University of Israel; Teaching Fellow, Department of Sociology and Anthropology, Bar-Ilan University, Israel. Sociology of gender and sexuality; gender, race, and ethnicity; organizational sociology; cultural sociology; comparative sociology; sociological theory; and feminist qualitative methods.

**MIRIAM KULLMANN**

Visiting Scholar (Fall 2021). Assistant Professor, Department of Private Law, Vienna University of Economics and

Business. Labor and employment law; nondiscrimination and equality law; the impact of technology on work; databased discrimination; and the future of work regulation.

**GIOVANNI MATERA**

Raphael Morrison Dorman Memorial Postdoctoral Fellow. PhD, Department of Sociology, L'École des hautes études

en sciences sociales (EHES), Paris. Psychiatry and democracy; community context and mental health; hospitality; migration; and sociology of valuation and evaluation.

**ARNAUD MENTRÉ**

Fellow. Diplomat, Ministry of Foreign Affairs, France; Consul General of France in Boston.

International affairs; transatlantic relations; European security and NATO-Russia Council; US-EU sanction policy; compliance issues; anti-money laundering/combating the financing of terrorism (AML/CFT) standards; foreign investment control; WTO; and OECD.

**BENJAMIN MILLER**

Visiting Scholar. Full Professor of International Relations, School of Political Sciences, University

of Haifa. The international order; international relations theory; war and peace; grand strategy; the great powers; nationalism and conflict; populism and democracy; and regional conflicts.

**ARTURO RODRÍGUEZ MORATÓ**

Visiting Scholar. Professor, Department of Sociology, Universitat de Barcelona. The societal value of culture;

urban cultural regeneration; cultural policy systems; artistic professions; and the dynamics of cultural creation.

**FRANK I. MÜLLER**

Visiting Scholar. Research Fellow, Marie Skłodowska-Curie Program, University of Amsterdam; Associate Researcher,

Technische Universität Dresden. Urban studies; housing and dwelling; security and crime; armed actors; qualitative and ethnographic methods; social inequalities; and Latin America.

**ANNA-THERESA RENNER**

Joseph A. Schumpeter Fellow. Assistant Professor, Department of Public Finance and Infrastructure

Policy, Technical University of Vienna. Health economics; inequity in spatial accessibility of healthcare services; regional science; and social infrastructure.

**IOANA SENDROIU**

Raphael Morrison Dorman Memorial Postdoctoral Fellow (Spring 2022). PhD, Department of Sociology, University

of Toronto. Crisis; emergency; human rights; postwar transitions; stigma and discrimination; and aspirations.

**ALWYN SPENCER**

Fellow. Head of Office and Senior Private Secretary, Cabinet Office. Economic geography; international economics;

sustainability; inequality and inclusion; demography; migration; new technologies; and populism and democracy.

**PIOTR SZOSTAK**

Fellow. Diplomat, Ministry of Foreign Affairs, Poland. Modern foreign policy; dependencies between internal and

foreign policy of states; human rights; international order; democracy; and security in Northeast Asia and US-China relations.

**JACOB M. THORNBURG**

Fellow. Colonel, United States Air Force. Data analytics; collecting, processing, and making decisions; diversity and inclusion; and workplace dynamics.

**CÉCILE VAN DE VELDE**

Visiting Scholar. Associate Professor, Department of Sociology, University of Montreal. Youth and generations in the

World; youth protests; intergenerational relationships; social emotions; and cross-country comparisons.

**THIJS VAN DOOREMALEN**

Associate. PhD, Department of Sociology, University of Amsterdam. Events; social change; political sociology; cul-

tural sociology; cross-national comparisons; and cultural repertoires.

**PETR VAŠÁT**

Visiting Scholar. Research Fellow, Marie Skłodowska-Curie Program, Georg-Simmel Center for Metropolitan

Studies, Humboldt-Universität zu Berlin; Senior Researcher, Local and Regional Studies, Institute of Sociology of the Czech Academy of Sciences.

Architecture/design and poverty; informality and city; everyday life; assemblage thinking; political economy; social research methodology; Central Eastern Europe; and Latin America.